



---

## THE CARLYLE GROUP

7,500 sq.ft. – 8,500 sq.ft.

### DESIGN PHASE

**\$50,000**

(approx. 400 hrs. x \$125/hr.)

### WORKING DRAWINGS

**\$165,600**

(approx. 11.5 months)

Architectural Site Plan: 1*	Window Details: 25
Reference Plan: 1	Dormer Details: 7
Floor Plans: 1- 2	Building Sections: 6
Roof Plan: 1	Wall Sections: 12
Exterior Elevations: 4	Cornice/Eave Details: 11
Elevations/Sections: 10	Fireplace & Chimney: 2
Finish Schedule: 1	Interior Elevations: 140
Door Schedule/Types: 1	Interior Moulding Details: 25
Door Details, Exterior: 27	Lighting Plan: 1- 2
Window Schedule/Types: 1	

**TOTAL: 278 - 280\***

\*Indicates number of drawings

---

### OPTIONS

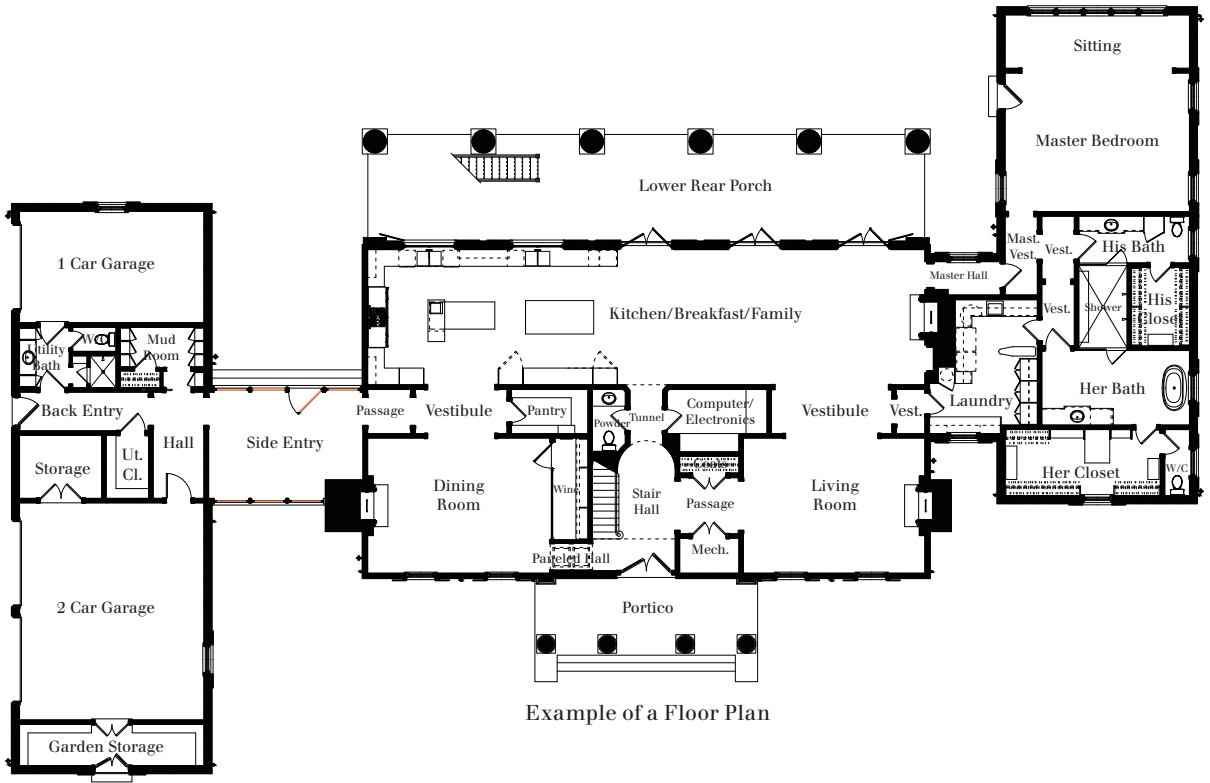
Site Visits: Site visits are available with fees starting at \$1,000 per visit.  
Exact fees will be determined by TDS based on location and extent of consultation.

Color Renderings: Front Elevation \$1,100, Perspective \$1,400

### INITIAL PAYMENT

The initial payment includes a \$17,000 retainer fee that will be returned upon completion of the working-drawing phase

---



Example of a Floor Plan



Example of an Elevation